



## SEL Rainwater Filter Chamber Specification

### SEL Rainwater Filter Chamber

Product Code SEE BELOW

The SEL rainwater filter chamber is available in 2 sizes 315mm Ø and 500mm Ø. The filter chamber has a single inlet and a single outlet. These are positioned at 45° to each other to promote screen flushing and provide flexibility for installation. Either spigot can be used as an inlet/outlet to suit the site requirements. For additional flexibility the filter is removable and can be placed on the outlet to suit the finalised installed orientation.

The filter chamber has a 200mm deep sump to accommodate the deposition of silt and debris which has been washed from the roof surface and filtered from the pass forward flow on the outlet of the filter chamber. The chamber spigots are sized to fit standard underground push-fit pvc drainage sockets.

Element	315mm Ø SELW05007	500mm Ø SELW05005
Product Code		
<b>Dimensions</b>		
Inlet spigot diameter (mm)	110	160
Outlet spigot diameter (mm)	110	160
Sump depth (mm)	200	200
Overall depth (mm)	500	500
<b>Filter Details</b>		
Filter pore size (mm)	1	1
Filter type	polyester mesh	polyester mesh
Removable	yes	yes
<b>Flow rate</b>		
Appx. max flow rate through filter (l/s)	5.75	8.36
<b>Maintenance</b>		
Interval - visual inspection	3 monthly	3 monthly
Remove and rinse filter if required		
<b>Material</b>	Polypropylene	Polypropylene

#### Disclaimer

This product specification is neither giving nor implying warranty for the use of this information for design and installation, as these are beyond our control. The data provided is typical and based upon the mean values obtained from the samples taken for any one test. If not otherwise indicated the test procedures reflect usually the mean of five samples. SEL Environmental Limited reserve the right to change the specifications without prior notice.

SEL Environmental Limited,  
Stormer Hill Works, Tottington,  
Bury, Lancashire  
BL8 4AT

Telephone: 01204 885555  
Fax: 01204 885533  
E-Mail: [sales@selenvironmental.co.uk](mailto:sales@selenvironmental.co.uk)  
Web: [www.selenvironmental.co.uk](http://www.selenvironmental.co.uk)

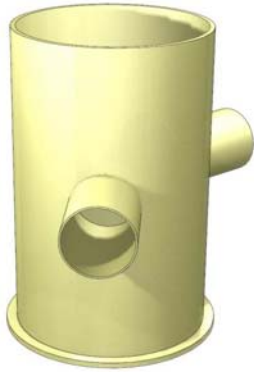


## SEL Rainwater Filter Chamber Specification

---

SEL Rainwater Filter Chamber

Product Code SEE BELOW

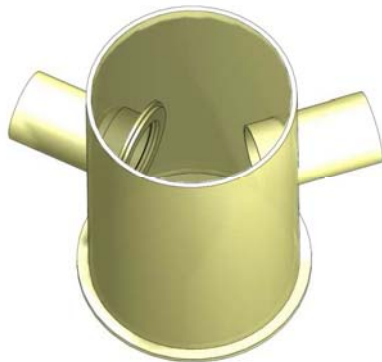


Rainwater Filter Chamber

315mm diameter Product code: SELW05007

500mm diameter Product code: SELW05005

Side View

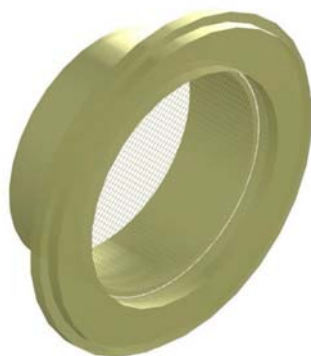


Rainwater Filter Chamber

315mm diameter Product code: SELW05007

500mm diameter Product code: SELW05005

Top view



Removable Filter Cartridge

To be installed on outlet

Secured using screw provided

1mm polyester filter

---

SEL Environmental Limited,  
Stormer Hill Works, Tottington,  
Bury, Lancashire  
BL8 4AT

Telephone: 01204 885555  
Fax: 01204 885533  
E-Mail: [sales@selenvironmental.co.uk](mailto:sales@selenvironmental.co.uk)  
Web: [www.selenvironmental.co.uk](http://www.selenvironmental.co.uk)